



*Denton Independent School District*

## **Proposed 2017-18 Middle School Rezoning Proposals**

Tuesday, November 1, 2016 / 7:00 p.m. at Navo Middle School

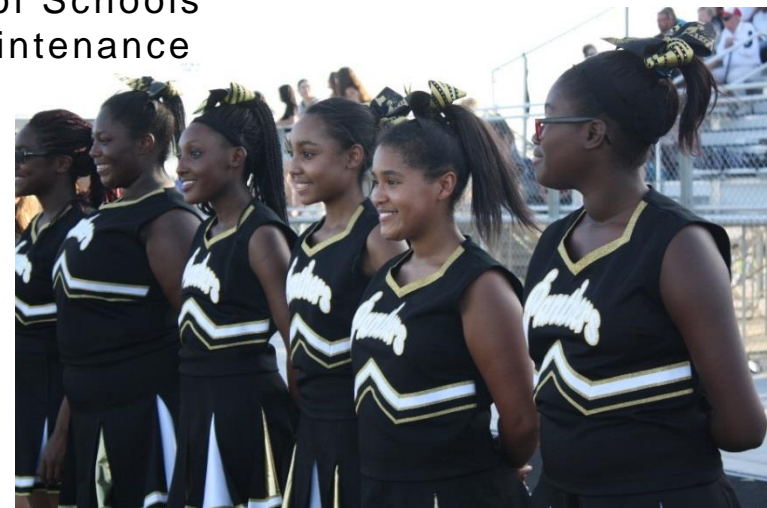
Wednesday, November 2, 2016 / 7:00 p.m. at Cross Oaks Elementary School

Thursday, November 10, 2016 / 7:00 p.m. at McMath Middle School

Dr. Daniel Lopez, Area Superintendent for Academic Programs  
Susannah O'Bara, Area Superintendent for Academic Programs  
Gwendolyn Perkins, Area Superintendent for Academic Programs  
Mario Zavala, Director of Communications  
Julie Zwahr, Coordinator of Communications  
Jim Watson, Director of Transportation  
Dr. Sheryl Alden, Assistant Director of Transportation

# Attendance Zone Meetings Summary

- Notification of community forums:
  - Letter mailed – October 24, 2016
  - Posted on District website
    - October 26, 2016, for Navo/Rodriguez
    - November 1, 2016, for McMath/Myers
  - School Messenger
    - October 30<sup>th</sup> & November 2<sup>nd</sup> for Navo/Rodriguez
    - November 6<sup>th</sup> & November 10 for McMath/Myers
- Navo & Rodriguez: Combined total of approximately 140 attendees
- Navo, Rodriguez, Cross Oaks, McMath, and Myers administrators attended
- Other Central Staff Participating:
  - Elizabeth Diaz de Leon, ESL/Bilingual Translator
  - Dr. Richard Valenta, Deputy Superintendent of Schools
  - Paul Andress, Director of Operations and Maintenance



*Denton Independent School District*

# Meeting Agenda

Welcome & Introductions

Denton ISD Overview & **Proposed** Boundaries

Questions & Answers

Break

Opportunity to review the maps, ask more specific questions, and complete 'Comment Forms'



*Denton Independent School District*

# Why are we here today?

## **PHASE I:**

Address Fast Growth  
& Future Growth



## **PHASE II:**

Balance Student Enrollment



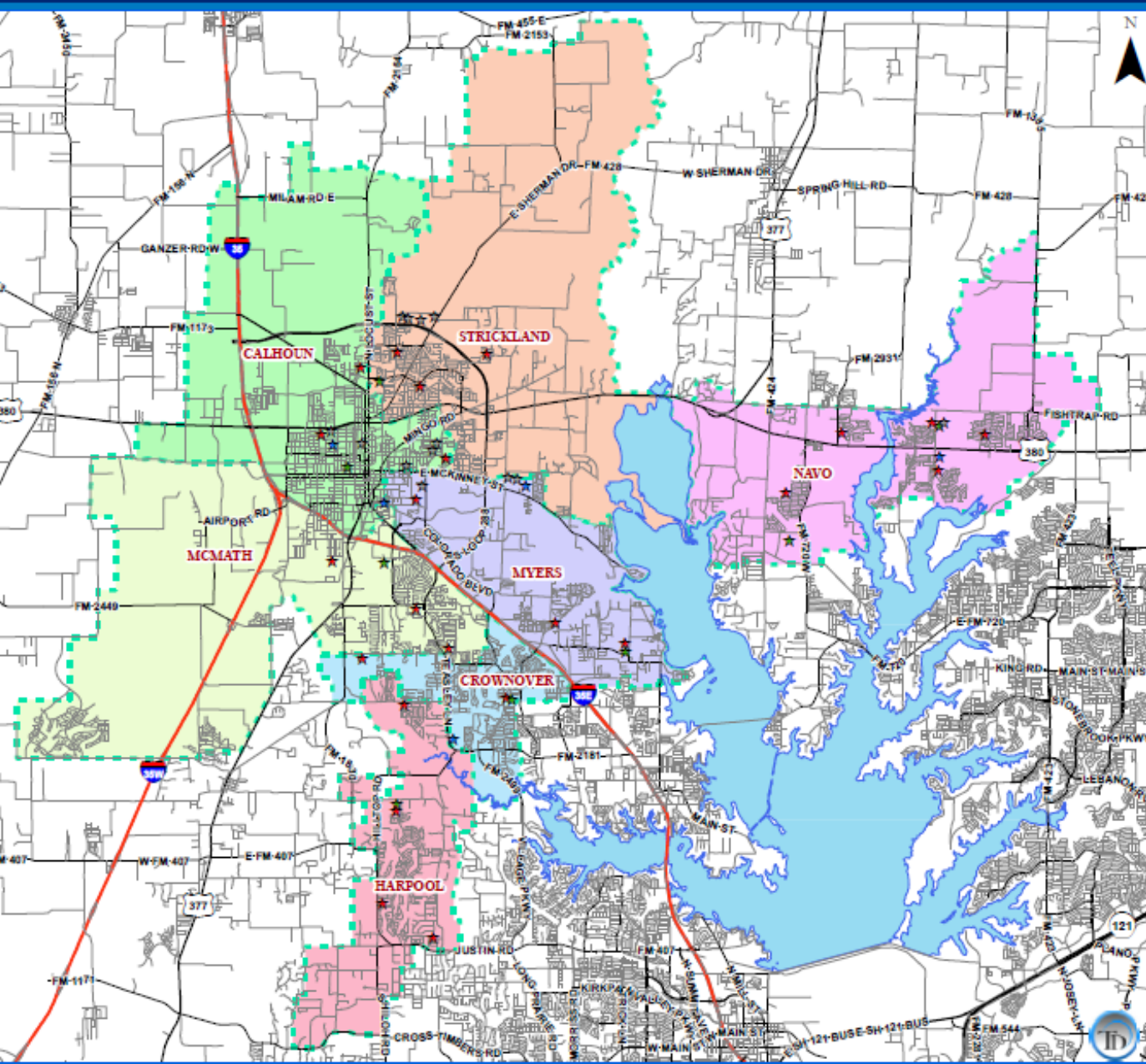
## **PHASE III:**

Enrich Our Partnership





# Current Middle School Boundaries



## DENTON INDEPENDENT SCHOOL DISTRICT

Middle School Attendance Zones  
2016-2017

- |                     |                     |                        |
|---------------------|---------------------|------------------------|
| <b>Schools</b>      | <b>Roads</b>        | <b>Lake Lewisville</b> |
| ★ Elementary School | — Local Roads       | Lake Lewisville        |
| ★ Middle School     | — Major Arterial    |                        |
| ★ High School       | — Secondary Highway |                        |
| ★ Alternative       | — Primary Highway   |                        |

**Middle Boundaries**

	<b>CALHOUN</b>	709 CONGRESS ST, DENTON, TX 76203	(940)356-2460
	<b>CROWNOVER</b>	1901 CREEKSIDE DR, CORINTH, TX 76210	(940)369-4760
	<b>HARPOOL</b>	9501 STACEE LANE, ARGYLE, TX 8235	(940)268-1700
	<b>MCMATH</b>	1900 JASON DRIVE, DENTON, TX 76205	(940)368-3300
	<b>MYERS</b>	131 GARZA RD, SHADY SHORES, TX 76208	(940)369-1500
	<b>NAVO</b>	1701 NAVO RD, AUBREY, TX 76227	(972)347-7300
	<b>STRICKLAND</b>	324 E WINDSOR DR, DENTON, TX 76209	(940)369-4200

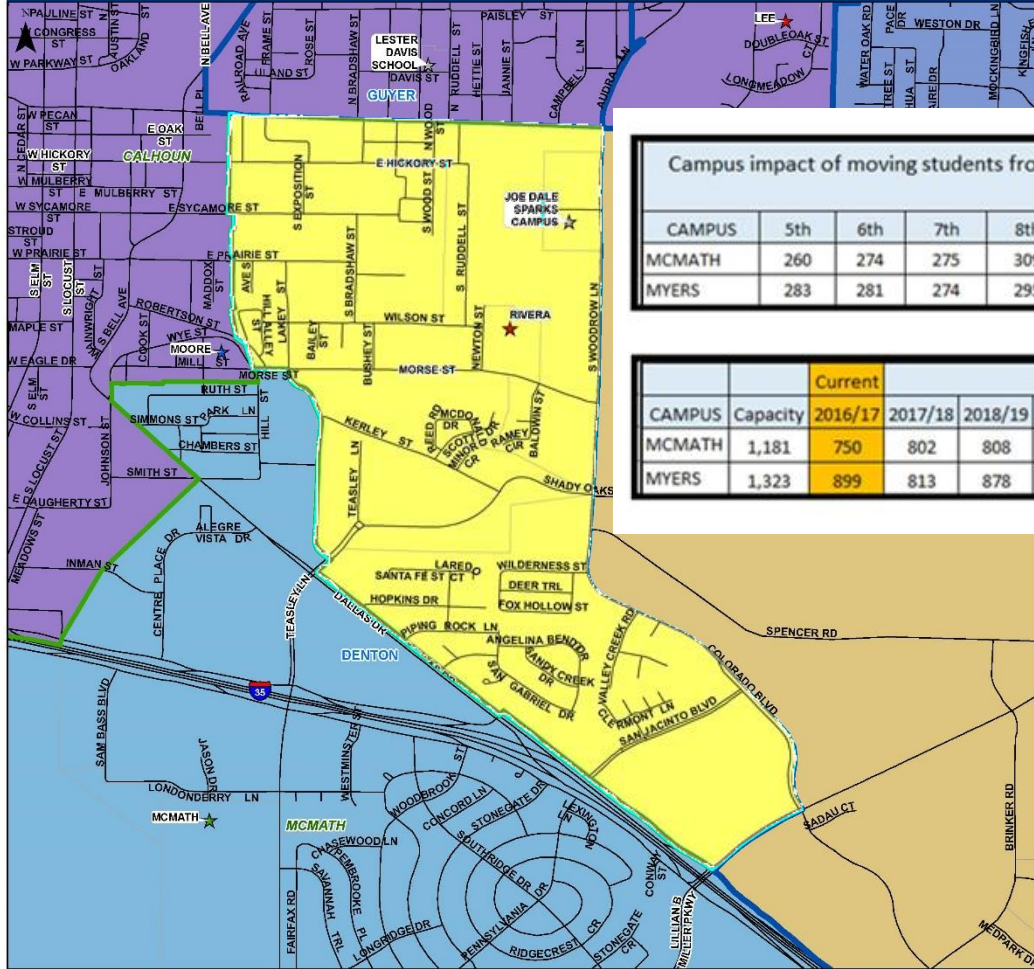


# Growth Over 5 & 10 Years

Campus Name	Capacity	Current	ENROLLMENT PROJECTIONS									
		2016/17	2017/18	2018/19	2019/20	2020/21	2021/22	2022/23	2023/24	2024/25	2025/26	2026/27
Calhoun Middle School	1,268	711	715	717	729	747	765	786	791	832	860	890
McMath Middle School	1,181	750	719	725	766	810	865	914	998	1,076	1,146	1,242
Navo Middle School	1,181	1,381	1,557	1,755	1,864	2,128	2,193	2,361	2,395	2,510	2,614	2,728
Crownover Middle School	1,181	946	925	929	931	917	868	841	820	833	842	859
Strickland Middle School	1,334	873	865	894	904	924	958	942	937	982	999	1,009
Harpool Middle School	1,181	981	984	932	950	918	876	844	823	815	840	865
Bette Myers Middle School	1,323	899	896	961	960	1,001	1,004	1,023	1,003	1,057	1,081	1,108
<b>MIDDLE SCHOOL TOTALS</b>	<b>8,649</b>	<b>6,541</b>	<b>6,661</b>	<b>6,913</b>	<b>7,104</b>	<b>7,445</b>	<b>7,529</b>	<b>7,711</b>	<b>7,767</b>	<b>8,105</b>	<b>8,382</b>	<b>8,701</b>
Middle School Absolute Change		185	120	252	191	341	84	182	56	338	277	319
Middle School Percent Change		2.91%	1.83%	3.78%	2.76%	4.80%	1.13%	2.42%	0.73%	4.35%	3.42%	3.81%

# Denton ISD: Middle School McMath/Myers Adjustment

**DRAFT**



Campus impact of moving students from Myers to McMath based on 2016/17 Students residing in impacted area.

CAMPUS	5th	6th	7th	8th	5TH-7TH	6TH-8TH	ED (6TH-8TH)	%ED	CAPACITY	UTILIZATION
MCMATH	260	274	275	309	809	858	421	49%	1,181	73%
MYERS	283	281	274	295	838	850	533	63%	1,323	64%

ENROLLMENT PROJECTIONS

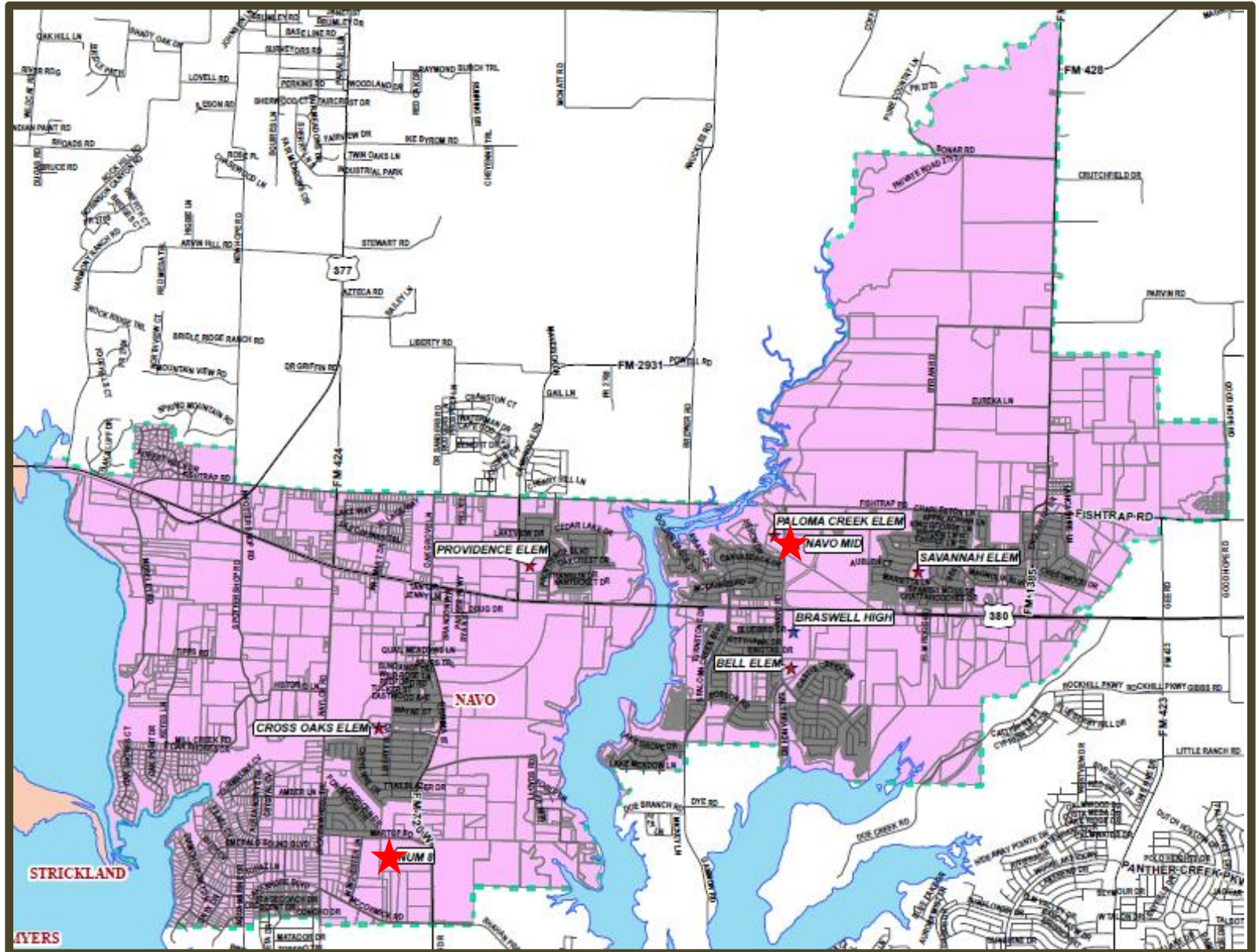
CAMPUS	Capacity	Current 2016/17	2017/18	2018/19	2019/20	2020/21	2021/22	2022/23	2023/24	2024/25	2025/26	2026/27
MCMATH	1,181	750	802	808	849	893	948	997	1,081	1,159	1,229	1,325
MYERS	1,323	899	813	878	877	918	921	940	920	974	998	1,025

**Legend**

- Current Middle Boundaries
- CALHOUN
- CROWNOVER
- HARPOOL
- MCMATH
- MYERS
- NAVO
- RODRIGUEZ
- STRICKLAND



# Navo and Rodriguez Middle School





*Denton Independent School District*

# Highlights of Growth

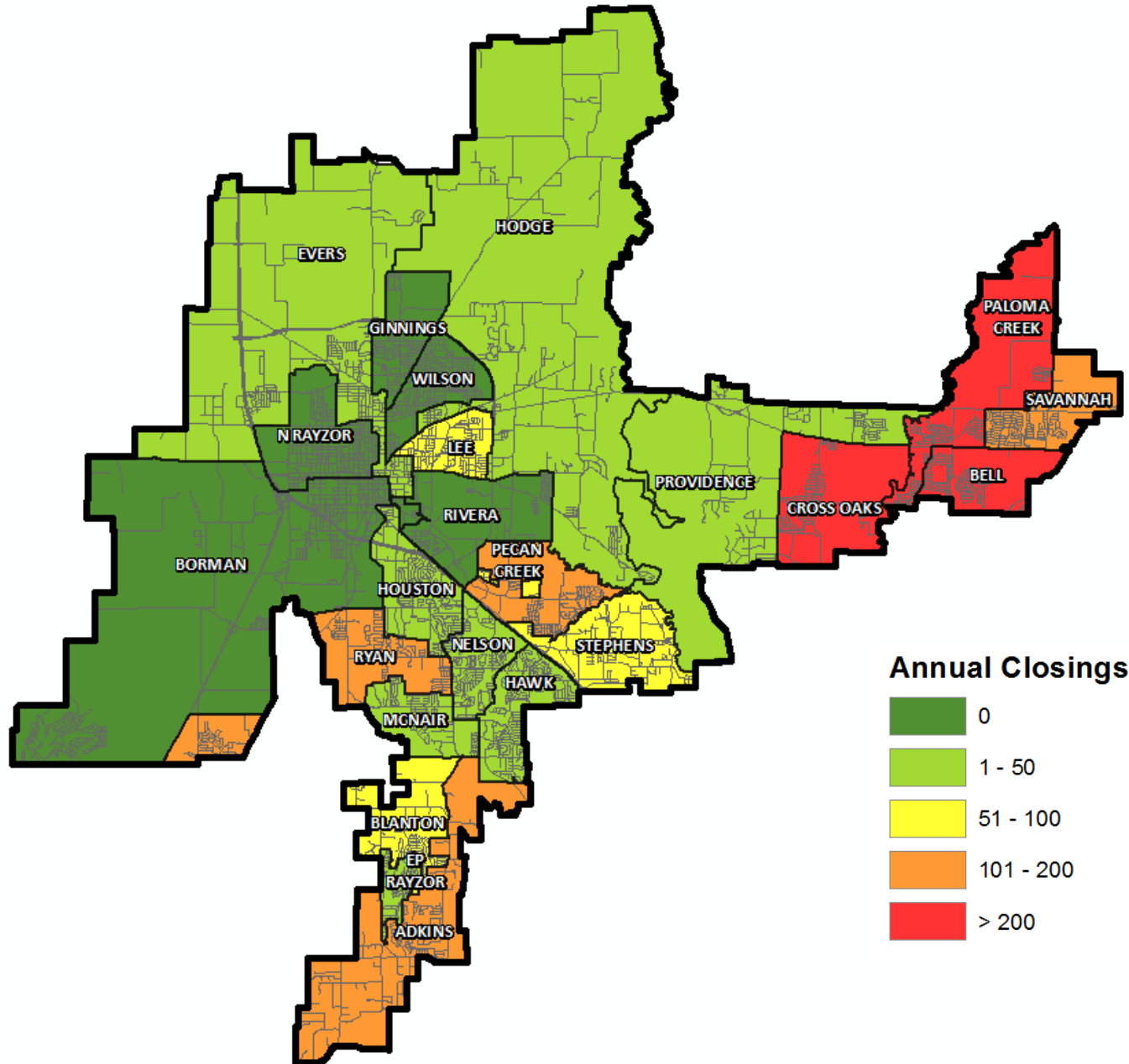
- Active growth:
  - Paloma Creek
  - Union Park
  - Arrow Brooke
  - Savannah
- Future subdivisions:
  - Oak Hill Ranch – Cross Oaks
  - Hillstone Pointe - Providence





# Annual Closing Distribution 3Q16

Elementary	Annual Closings
ADKINS	109
BELL	258
BLANTON	69
BORMAN*	0
CROSS OAKS	245
EP RAYZOR	13
EVERS	14
GINNINGS	0
HAWK	35
HODGE	1
HOUSTON	35
LEE	90
MCNAIR	39
N RAYZOR	0
NELSON	18
PALOMA CREEK	257
PECAN CREEK	145
PROVIDENCE	30
RIVERA	0
RYAN	132
SAVANNAH	189
STEPHENS	54
WILSON	0
<b>Grand Totals</b>	<b>1,733</b>



\* Does not include age restricted communities

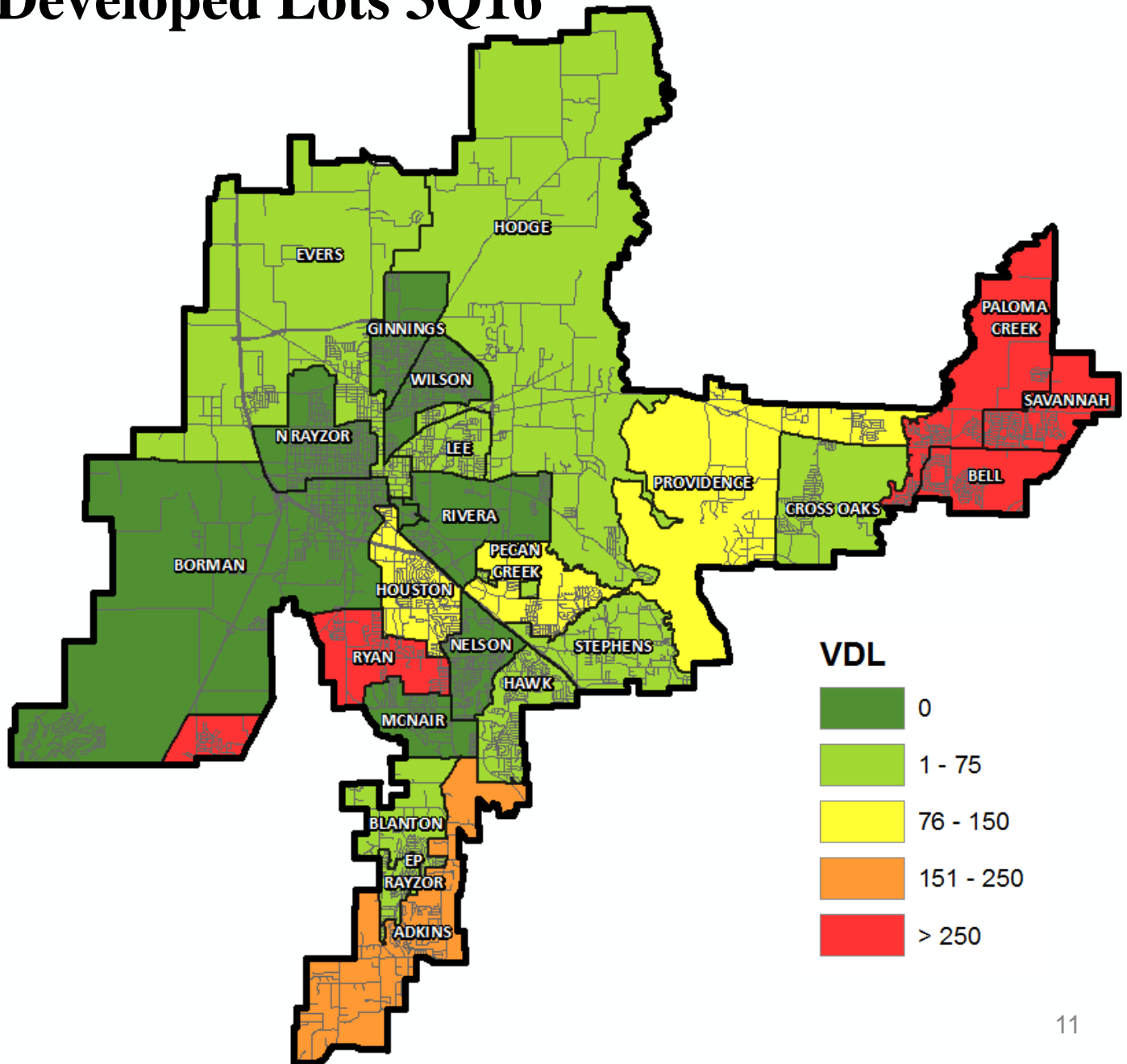




# Vacant Developed Lots 3Q16

Elementary	Vacant Dev. Lots
ADKINS	187
BELL	347
BLANTON	22
BORMAN*	0
CROSS OAKS	16
EP RAYZOR	20
EVERS	44
GINNINGS	0
HAWK	10
HODGE	5
HOUSTON	133
LEE	16
MCNAIR	0
N RAYZOR	0
NELSON	0
PALOMA CREEK	454
PECAN CREEK	107
PROVIDENCE	102
RIVERA	0
RYAN	355
SAVANNAH	330
STEPHENS	58
WILSON	0
<b>Grand Totals</b>	<b>2,206</b>

\* Does not include age restricted communities





# 3Q Ten Year Forecast

## By Grade Level

Year (Oct.)	EE/ PRE-K	K	1st	2nd	3rd	4th	5th	6th	7th	8th	9th	10th	11th	12th	Total	Total Growth	Percent
2012/13	1,001	2,121	2,162	2,052	2,065	2,108	2,059	1,929	1,887	1,768	1,819	1,769	1,610	1,425	25,775		
2013/14	967	2,074	2,164	2,163	2,069	2,104	2,085	2,041	1,919	1,904	1,925	1,708	1,640	1,549	26,312	537	2.1%
2014/15	1,063	2,068	2,099	2,178	2,166	2,082	2,133	2,075	2,052	1,973	2,042	1,873	1,665	1,551	27,020	708	2.7%
2015/16	1,143	1,954	2,143	2,088	2,190	2,152	2,115	2,154	2,128	2,094	2,091	1,985	1,756	1,566	27,559	539	2.0%
2016/17	1,108	2,051	2,042	2,199	2,175	2,237	2,207	2,159	2,207	2,185	2,280	2,115	2,002	1,695	28,662	1,103	4.0%
2017/18	1,108	2,114	2,133	2,110	2,296	2,263	2,329	2,228	2,199	2,244	2,351	2,217	2,043	1,915	29,550	888	3.1%
2018/19	1,108	2,196	2,203	2,216	2,197	2,410	2,350	2,371	2,272	2,280	2,402	2,277	2,143	1,941	30,366	816	2.8%
2019/20	1,108	2,268	2,268	2,296	2,302	2,284	2,519	2,385	2,398	2,331	2,466	2,326	2,195	2,048	31,194	828	2.7%
2020/21	1,108	2,349	2,354	2,388	2,391	2,414	2,395	2,564	2,421	2,470	2,518	2,405	2,245	2,089	32,111	917	2.9%
2021/22	1,108	2,398	2,441	2,464	2,502	2,498	2,508	2,448	2,614	2,477	2,647	2,453	2,321	2,139	33,018	907	2.8%
2022/23	1,108	2,437	2,499	2,551	2,573	2,613	2,613	2,563	2,482	2,676	2,671	2,578	2,367	2,213	33,944	926	2.8%
2023/24	1,108	2,515	2,529	2,610	2,656	2,693	2,729	2,642	2,618	2,517	2,857	2,600	2,488	2,256	34,818	874	2.6%
2024/25	1,108	2,564	2,615	2,635	2,732	2,777	2,809	2,766	2,669	2,680	2,716	2,783	2,509	2,371	35,734	916	2.6%
2025/26	1,108	2,608	2,660	2,727	2,754	2,856	2,905	2,846	2,817	2,729	2,904	2,644	2,682	2,389	36,629	895	2.5%
2026/27	1,108	2,644	2,694	2,769	2,850	2,880	2,988	2,936	2,897	2,878	2,934	2,827	2,552	2,554	37,511	882	2.4%

\*Yellow box = largest grade per year

\*Green box = second largest grade per year

- Denton ISD will enroll more than 30,000 students by 2018
- 5 year growth = 4,356 students (2Q: 3,351)
- 2021/22 enrollment = 33,018 students (2Q: 2020/21 = 30,910)
- 10 year growth = 8,849 students
- 2026/27 enrollment = 37,511 students (2Q: 2025/26 = 35,178)

**28,646 students strong  
as of November 11, 2016**

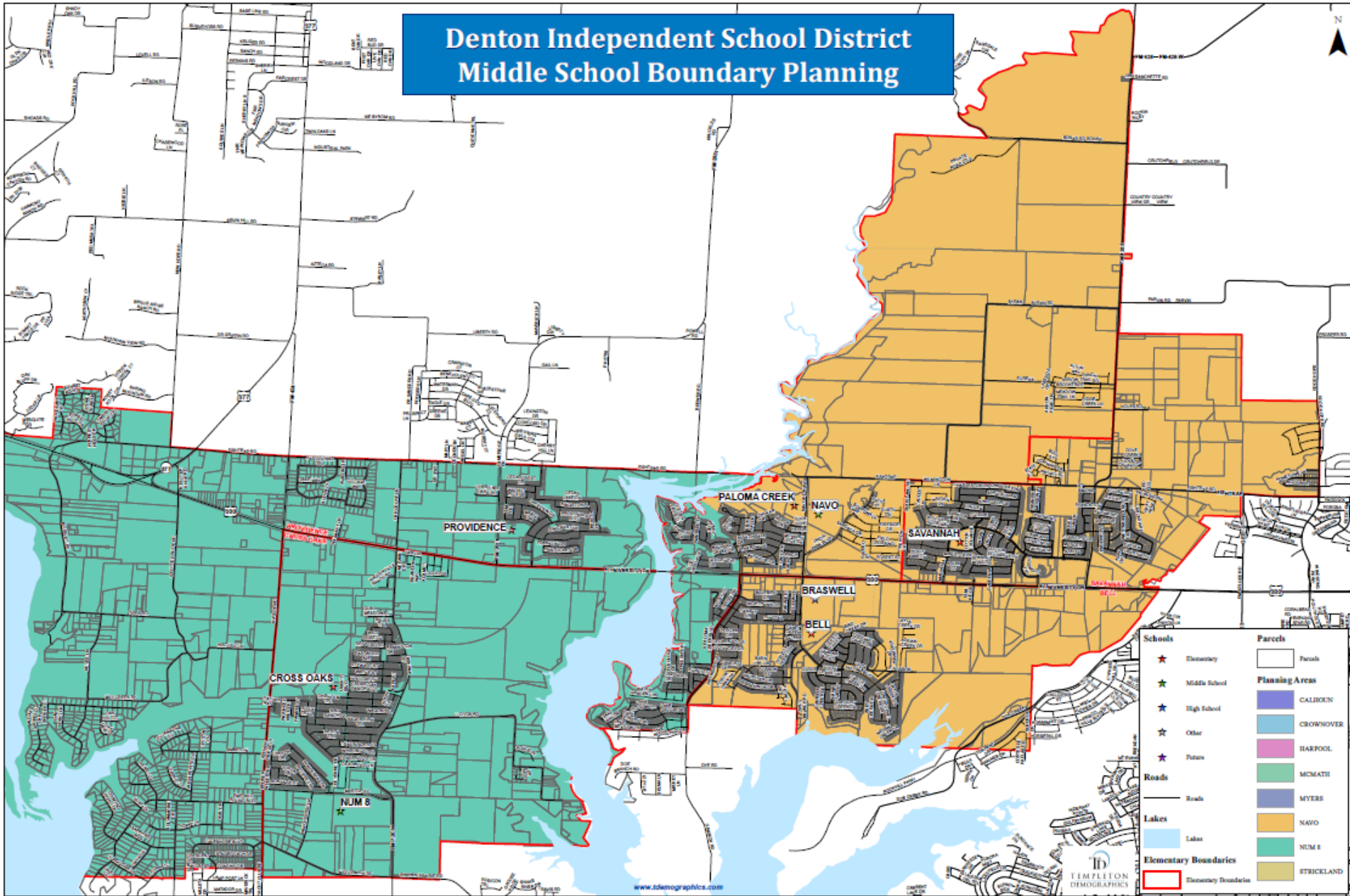
# Ten Year Forecast

## By Elementary Campus

Campus Name	Capacity	Current	ENROLLMENT PROJECTIONS									
		2016/17	2017/18	2018/19	2019/20	2020/21	2021/22	2022/23	2023/24	2024/25	2025/26	2026/27
Bell Elementary School	740	653	737	796	843	864	906	910	908	900	901	895
Blanton Elementary School	740	486	482	462	424	419	409	415	421	431	436	437
Borman Elementary School	740	465	485	527	601	709	810	915	1,030	1,143	1,264	1,382
Cross Oaks Elementary School	740	740	785	788	794	803	809	824	848	860	879	898
E P Rayzor Elementary School	740	420	397	378	370	357	353	359	364	376	389	402
Evers Park Elementary School	740	577	599	631	646	653	700	749	801	854	921	998
Ginnings Elementary School	740	593	587	603	619	643	661	687	711	739	766	791
Hodge Elementary School	740	659	654	651	664	666	689	696	706	719	736	754
Sam Houston Elementary School	740	590	623	636	635	653	653	655	677	687	699	702
Nelson Elementary School	740	630	636	628	634	638	645	621	617	610	601	595
Lee Elementary School	740	600	617	626	632	638	652	651	647	647	648	645
McNair Elementary School	740	583	570	563	560	567	575	583	590	599	607	611
Hawk Elementary School	740	699	652	623	601	580	588	587	590	593	585	570
Olive Stephens Elementary School	740	503	511	513	534	531	521	541	552	554	575	575
Paloma Creek Elementary School	740	486	591	717	850	1,001	1,153	1,280	1,303	1,336	1,351	1,354
Pecan Creek Elementary School	740	659	679	702	733	739	759	781	806	808	794	796
Providence Elementary School	740	406	406	422	437	441	467	484	514	545	553	559
Newton Rayzor Elementary School	740	648	638	633	627	623	616	611	614	612	612	614
Rivera Elementary School	740	615	639	654	663	681	712	711	717	716	730	732
Savannah Elementary School	740	712	722	712	735	707	685	682	692	693	693	697
Ryan Elementary School	740	624	661	707	720	747	789	836	885	942	975	1,001
Wilson Elementary School	740	589	580	593	587	581	585	608	616	622	627	627
Adkins Elementary School	740	377	397	410	431	453	477	503	526	549	571	593
Ann Windle School For Young Child	740	357	357	357	357	357	357	357	357	357	357	357
Gonzalez School For Young Child	740	347	347	347	347	347	347	347	347	347	347	347
<b>ELEMENTARY TOTALS</b>	18,500	14,018	14,352	14,679	15,044	15,398	15,918	16,393	16,839	17,239	17,617	17,932
Elementary Absolute Change		241	334	327	365	354	520	475	446	400	378	315
Elementary Percent Change		1.75%	2.38%	2.28%	2.49%	2.35%	3.38%	2.98%	2.72%	2.38%	2.19%	1.79%

# Rezoning PROPOSAL 1

## Denton Independent School District Middle School Boundary Planning









# Rezoning PROPOSAL 1

## Middle School Grade Report

School	5	6	7	8	5 <sup>th</sup> – 7 <sup>th</sup>	6 <sup>th</sup> – 8 <sup>th</sup>	Capacity	Utilization	ED	%ED
CALHOUN	268	227	220	239	715	686	1,268	54.1%	507	73.9%
CROWNOVER	296	306	314	324	916	944	1,181	79.9%	229	24.3%
HARPOOL	320	294	374	295	988	963	1,181	81.5%	115	11.9%
McMATH	235	246	247	282	728	775	1,181	65.6%	353	45.5%
MYERS	308	309	302	322	919	933	1,323	70.5%	601	64.4%
NAVO	250	264	257	225	771	746	1,181	63.2%	224	30.0%
RODRIGUEZ	227	228	218	198	673	644	1,300	49.5%	221	34.3%
STRICKLAND	303	285	275	300	863	860	1,334	64.5%	539	62.7%
<b>TOTAL</b>	<b>2,207</b>	<b>2,159</b>	<b>2,207</b>	<b>2,185</b>	<b>6,573</b>	<b>6,551</b>	<b>9,949</b>	<b>65.8%</b>	<b>2,789</b>	<b>42.6%</b>

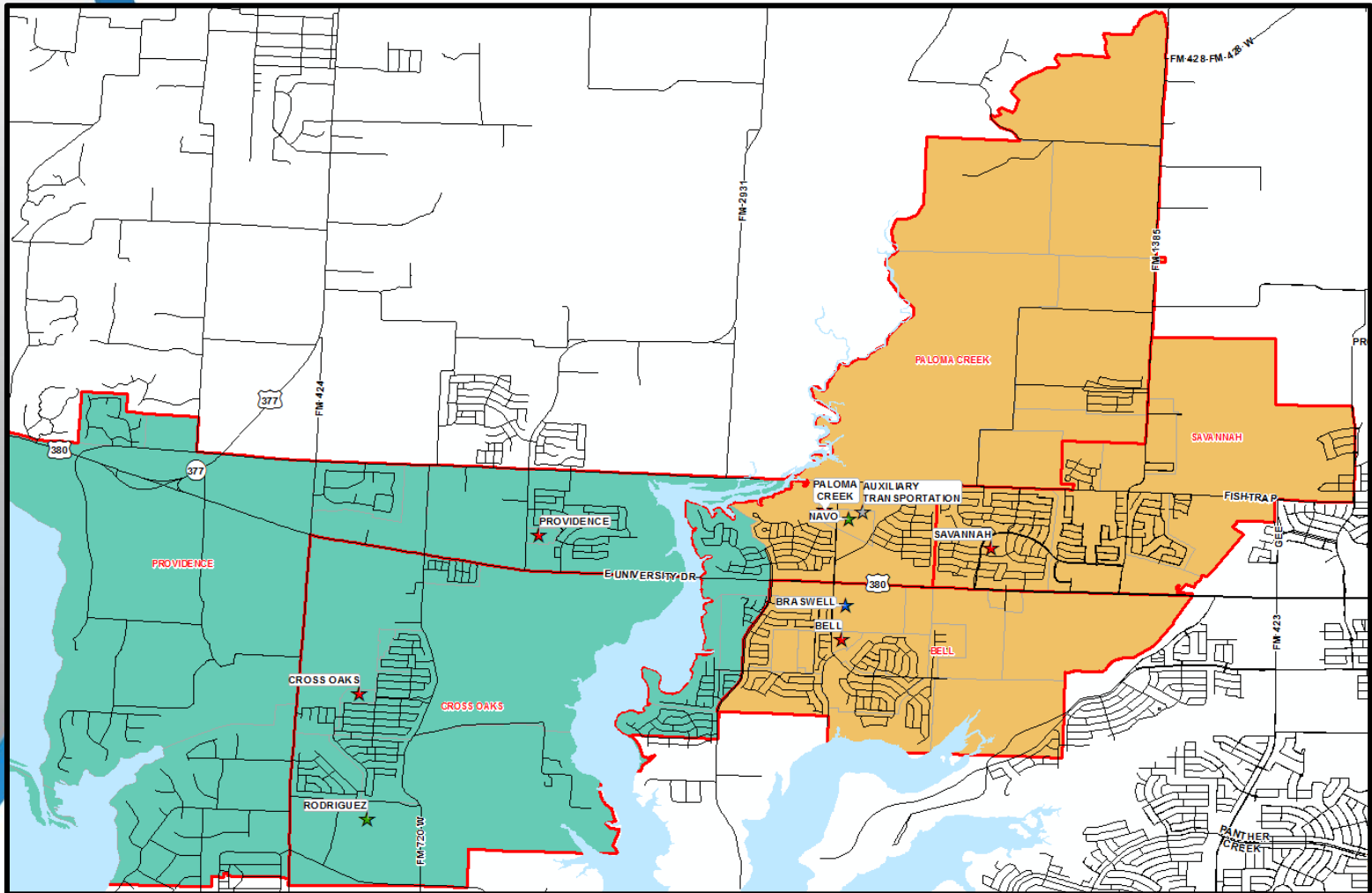




# Navo and Rodriguez Middle School

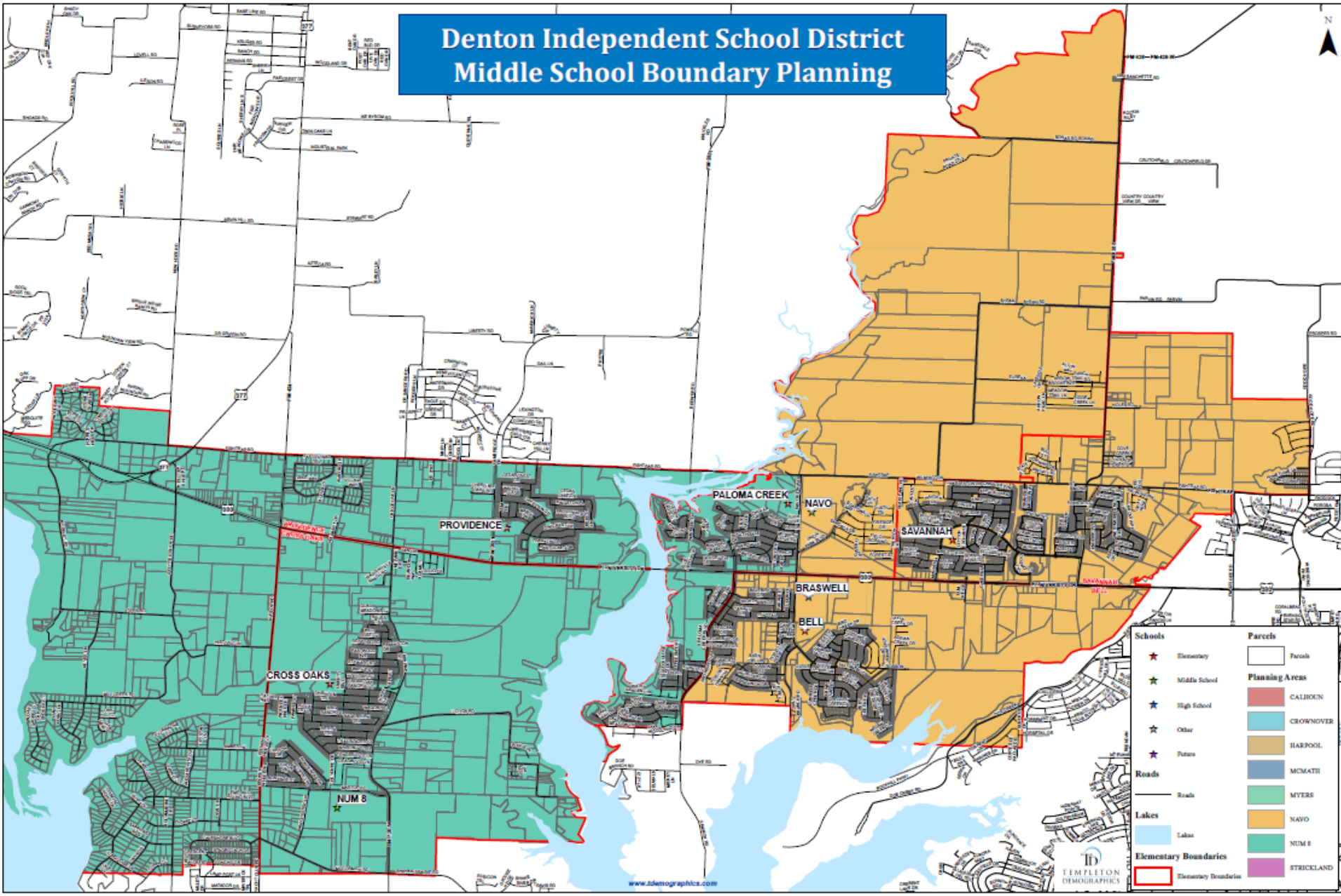
## DRAFT PROPOSAL 1

Campus Name	Capacity	2015/16	Current	PRELIMINARY ENROLLMENT PROJECTIONS - PLAN 1									
			2016/17	2017/18	2018/19	2019/20	2020/21	2021/22	2022/23	2023/24	2024/25	2025/26	2026/27
Navo Middle School	1,181	1,211	1,381	838	951	1,030	1,183	1,268	1,394	1,478	1,623	1,748	1,816
Rodriguez Middle School	1,323	0	0	720	757	762	818	843	889	877	881	904	952

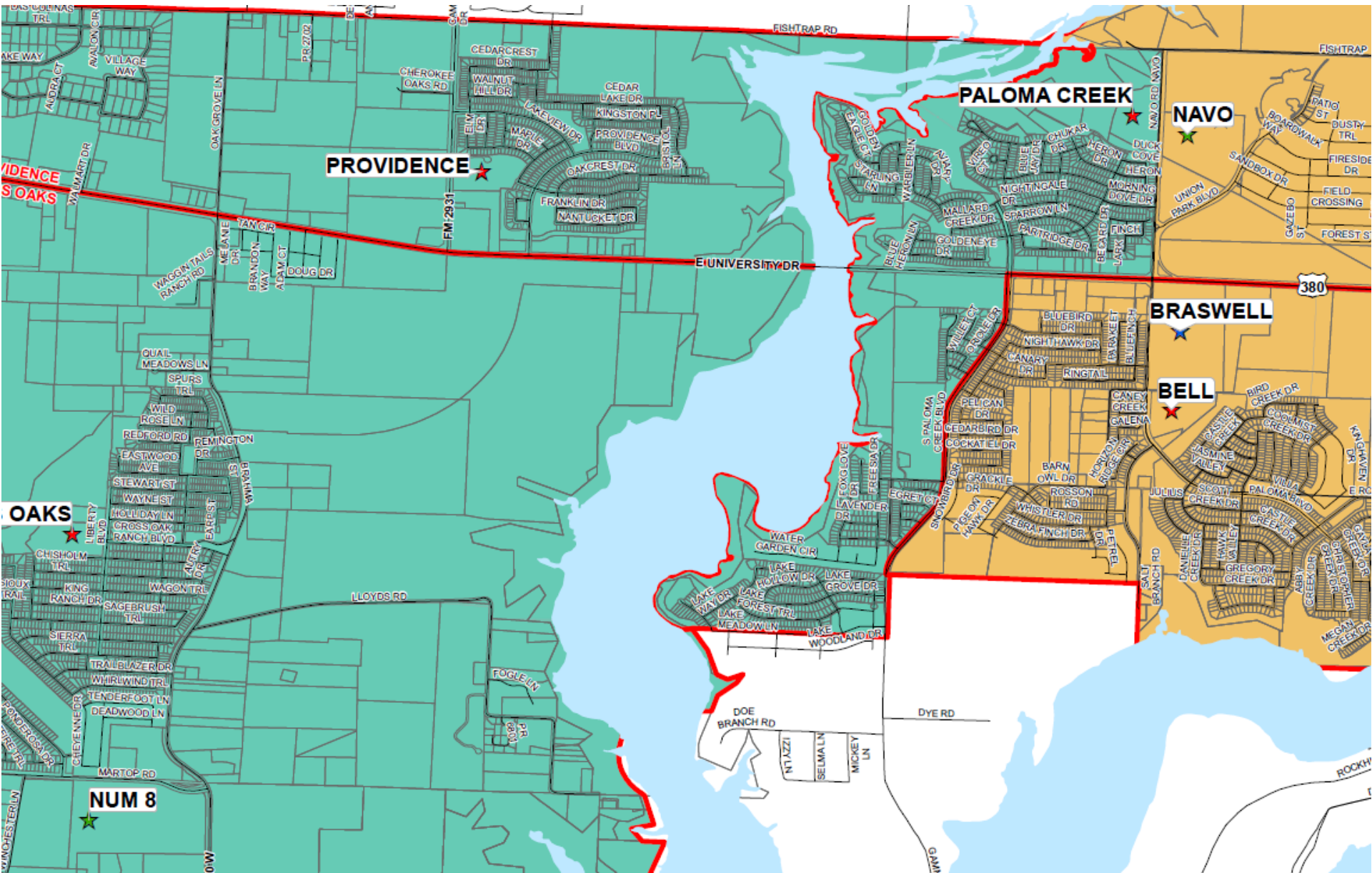




# Rezoning PROPOSAL 2



# Rezoning PROPOSAL 2





# Rezoning PROPOSAL 2

## Middle School Grade Report

School	5	6	7	8	5 <sup>th</sup> – 7 <sup>th</sup>	6 <sup>th</sup> – 8 <sup>th</sup>	Capacity	Utilization	ED	%ED
CALHOUN	268	227	220	239	715	686	1,268	54.1%	507	73.9%
CROWNOVER	296	306	314	324	916	944	1,181	79.9%	229	24.3%
HARPOOL	320	294	374	295	988	963	1,181	81.5%	115	11.9%
McMATH	235	246	247	282	728	775	1,181	65.6%	353	45.5%
MYERS	308	309	302	322	919	933	1,323	70.5%	601	64.4%
NAVO	219	227	221	198	667	646	1,181	54.7%	184	28.5%
RODRIGUEZ	259	265	254	225	778	744	1,300	57.2%	261	35.1%
STRICKLAND	303	285	275	300	863	860	1,334	64.5%	539	62.7%
<b>TOTAL</b>	<b>2,207</b>	<b>2,159</b>	<b>2,207</b>	<b>2,185</b>	<b>6,574</b>	<b>6,551</b>	<b>9,949</b>	<b>65.8%</b>	<b>2,789</b>	<b>42.6%</b>



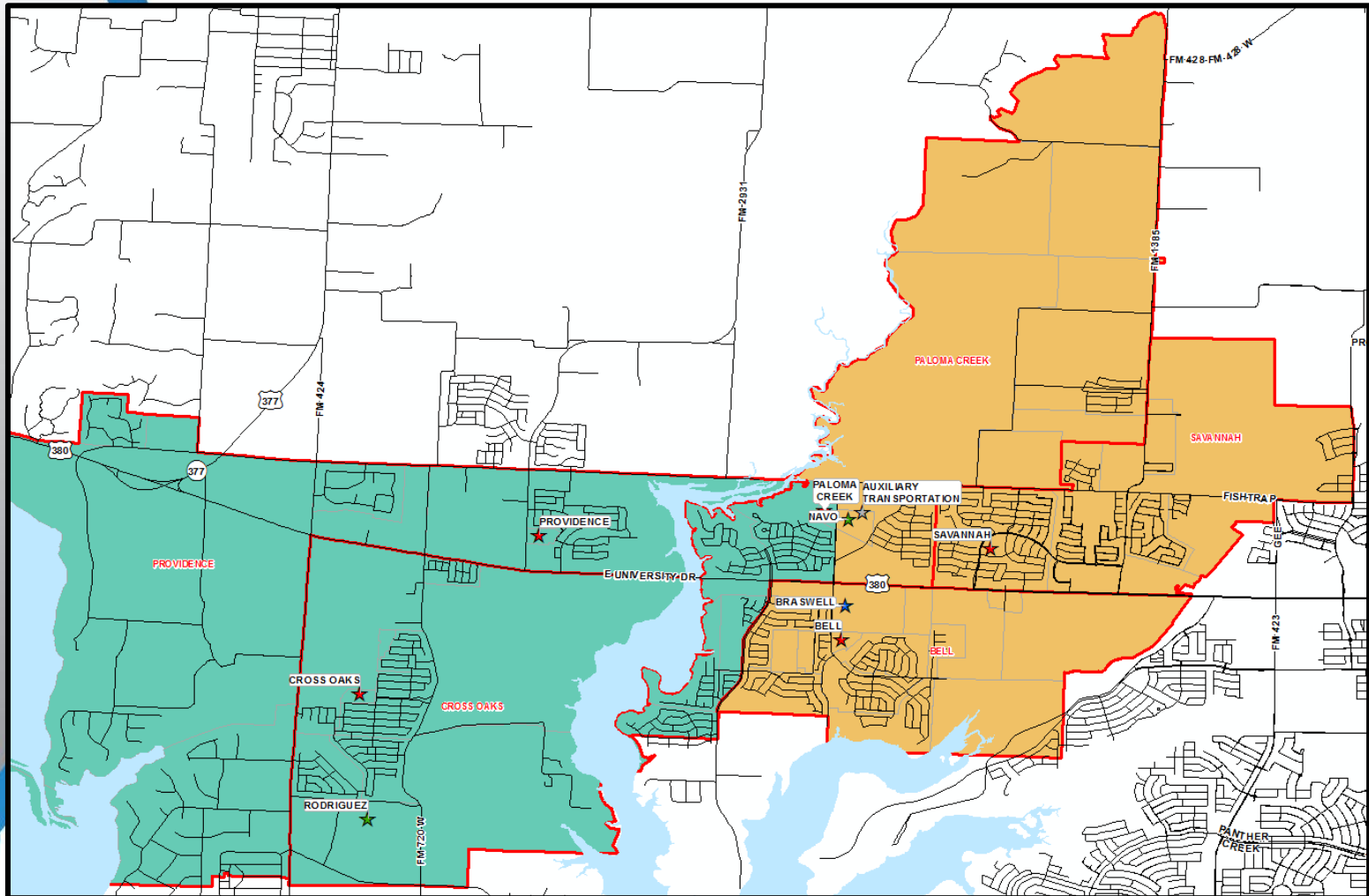




# Navo and Rodriguez Middle School

## DRAFT PROPOSAL 2

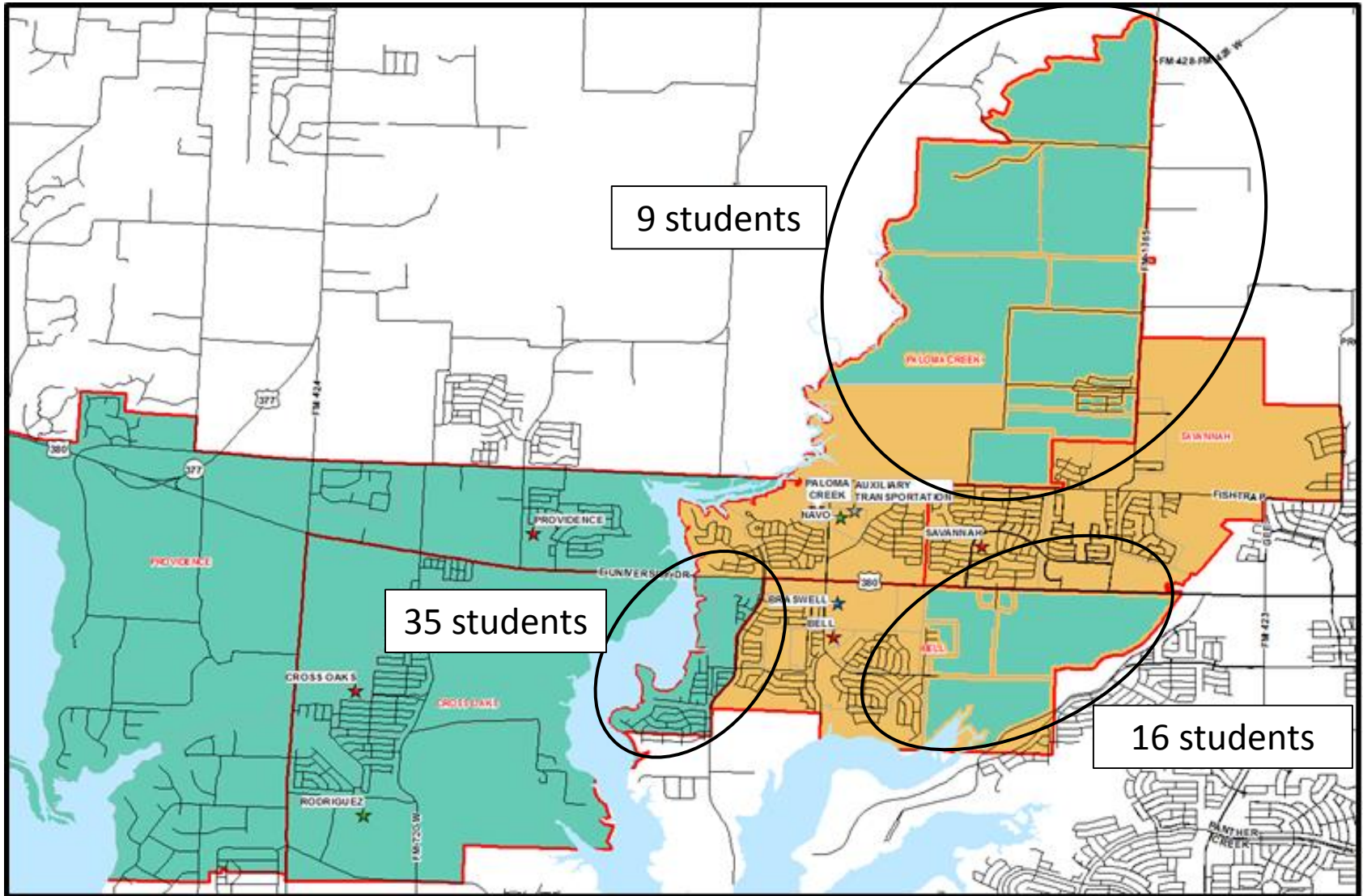
Campus Name	Capacity	2015/16	Current	PRELIMINARY ENROLLMENT PROJECTIONS - PLAN 2									
			2016/17	2017/18	2018/19	2019/20	2020/21	2021/22	2022/23	2023/24	2024/25	2025/26	2026/27
Navo Middle School	1,181	1,211	1,381	724	836	923	1,067	1,157	1,285	1,371	1,519	1,648	1,712
Rodriguez Middle School	1,323	0	0	833	864	862	915	940	986	975	1,004	1,036	1,074



# *Community Feedback*

*Enriching our partnership*







## **Proposed** 2017-18 Middle School Rezoning Plan

### **What happens next?**

- Provide Board of Trustees with questions & comments from both attendance meetings
- Workshop Proposed Rezoning Plans on Tuesday, November 15, 2016, at the Board Meeting  
*(Meeting will be held at Dennis Stephens Administration Building – 1307 N. Locust Street – Denton, Tx 76201 : Starts at 6 p.m.)*
- The public will have an opportunity to speak  
*(Must fill out card prior to speaking)*
- No decision will be made on November 15, 2016
  - This allows the Board of Trustees to consider community feedback and the options presented
- Approval of rezoning will be considered at a separate board meeting

## **Frequently Asked Questions**

- Will there be transportation service?
- How often does rezoning occur?
- What guarantee do we have that our children will not be assigned to another school in a few years?
- What about programs?
- Will current students be given a choice to stay?

# Thank you!

Empowering lifelong learners to be engaged citizens who positively impact their local and global community

